

**BALTIMORE AIRCOIL**One of the
Amsted Industries**SUBMITTAL DATA FORM**

C U S T O M E R	BONLAND INDUSTRIES, INC 50 NEWARK-POMPTON TURNPIKE WAYNE, NJ 07470	DATE P.O. NO. B.A.C. NO. MODEL NO.	4/10/92 1887 92100777 VT1-680-PMC
--------------------------------------	--	---	--

PROJECT: ENGINEER: B.A.C. REP:	MONTCLAIR STATE COLLEGE - MONTCLAIR, NJ DLB ASSOCIATES - WANAMASSA, NJ NEWTON-METALLO, INC. - ELMWOOD PARK, NJ
--------------------------------------	--

COOLING TOWER

CERTIFIED CAPACITY: 1750 USGPM OF WATER FROM 95 F TO 85 F AT 78 F ENTERING WET BULB AND 0.9 PSIG SPRAY PRESSURE

FAN MOTOR(S): (2) 25 HP, 1800 RPM, 3 PHASE, 60 HERTZ, 230/460 SUIT 480 VOLTS, STANDARD TEFC ENCLOSURE. FAN DRIVES BASED ON 0 " ESP.

NOTE: Two speed fan motors require a starter that incorporates a 15 second time delay when switching from high to low speed.

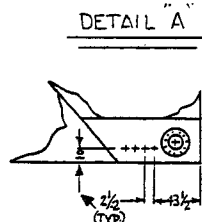
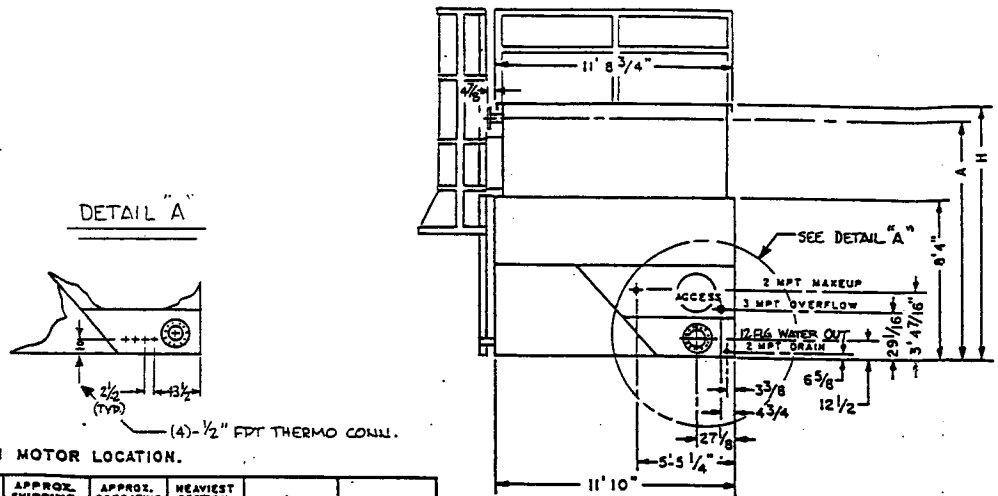
15 COPIES OF SUBMITTAL DATA FOR APPROVAL

FEATURE	FEATURE
ENERGY MISER FAN SYSTEM WITH (2) 7 1/2HP TEFC MOTORS (4) FAN CYCLING THERMOSTATS MOUNTED EXTENDED LUBRICATION LINES	

THANK YOU FOR YOUR ORDER ACCEPTED AT THE B.A.C. BALTIMORE, MD PLANT ON: APRIL 7, 1992.

FURTHER PROCESSING OF THIS ORDER IS CONTINGENT UPON RECEIPT OF APPROVED SUBMITTALS. SHIPMENT WILL BE APPROXIMATELY 7-8 WEEKS FROM RECEIPT OF A FIRM RELEASE.

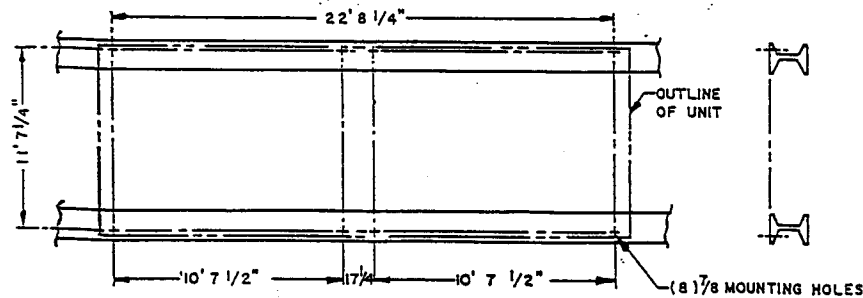
P.O. BOX 7322, BALTIMORE, MARYLAND 21227 / TELE: (301) 799-6200 / FAX: 301-799-6416
P.O. BOX 960, MADERA, CALIFORNIA 93639 / TELE: (209) 673-9231 / FAX: 209-673-5095
P.O. BOX 317, PAXTON, ILLINOIS 60957 / TELE: (217) 379-2311 / FAX: 217-379-3522
P.O. BOX 402, MILFORD, DELAWARE 19963 / TELE: (302) 422-3061 / FAX: 302-422-9269



(M) FAN MOTOR LOCATION.

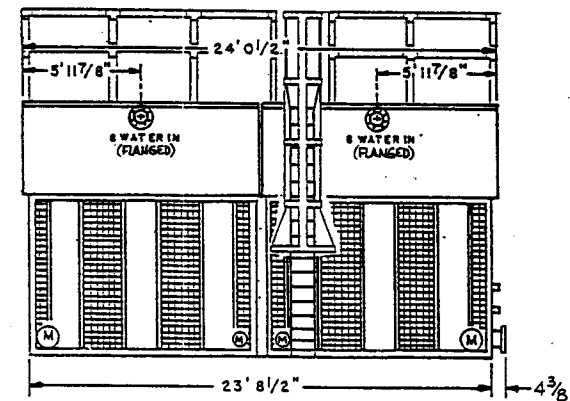
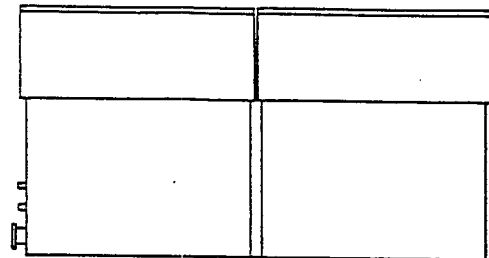
MODEL NO.	APPROX. SHIPPING WEIGHT	APPROX. OPERATING WEIGHT	HEAVIEST SECTION (FAN)	A	H
VTI-680-PMC	17580	32150	10220	13' 11 7/8"	14' 7 5/8"
VTI-730-Q	19520	34080	10220	14' 4 5/8"	16' 0 3/8"
VTI-800-Q	19600	34170	10300	15' 4 5/8"	16' 0 3/8"
VTI-850-RCR	19840	34410	10540	15' 4 9/8"	16' 0 3/8"

SUGGESTED SUPPORT DETAILS



NOTES:

1. THE RECOMMENDED SUPPORT ARRANGEMENT FOR TIGGO UNITS CONSISTS OF TWO PARALLEL I-BEAMS EXTENDING THE FULL LENGTH OF THE UNIT. SUPPORTS AND ANCHOR BOLTS ARE TO BE DESIGNED AND FURNISHED BY OTHERS.
2. ALL SUPPORTING BEAMS ARE TO BE FLUSH AND LEVEL AT TOP AND MUST BE ORIENTED RELATIVE TO GAGE LINE AS SHOWN.
3. RECOMMENDED DESIGN LOADS FOR EACH BEAM SHOULD BE 70% OF THE TOTAL UNIT OPERATING WEIGHT APPLIED AS A UNIFORM LOAD TO EACH BEAM. BEAMS SHOULD BE DESIGNED IN ACCORDANCE WITH STANDARD STRUCTURAL PRACTICE. THE MAXIMUM ALLOWABLE DEFLECTION OF BEAMS UNDER THE UNIT SHALL BE 1/2 OF AN INCH.
4. ALL MOUNTING HOLES ARE 7/8 INCH DIAMETER AT THE LOCATIONS SHOWN.
5. IF VIBRATION ISOLATORS ARE USED, A RAIL OR CHANNEL MUST BE PROVIDED BETWEEN THE UNIT AND THE ISOLATORS TO PROVIDE CONTINUOUS UNIT SUPPORT. ADDITIONALLY, THE SUPPORT BEAMS MUST BE DESIGNED TO ACCOMMODATE THE OVERALL LENGTH AND MOUNTING HOLE LOCATION OF THE ISOLATORS WHICH MAY DIFFER FROM THOSE OF THE UNIT. REFER TO VIBRATION ISOLATOR DRAWINGS FOR THIS DATA.



NOTES:

1. ALL DIMENSIONS ARE IN FEET AND INCHES. WEIGHTS ARE IN POUNDS.
2. UNLESS OTHERWISE INDICATED, ALL CONNECTIONS 4 INCHES AND SMALLER ARE MPT AND CONNECTIONS 8 INCHES AND LARGER ARE BEVELLED FOR WELDING.

B.A.C.
ORDER NO. 92100777
DATE August 26, 1992

BALTIMORE AIRCOIL

COOLING TOWER

DWG. NO. BAC-8581 B